

## Lightsource Test Report

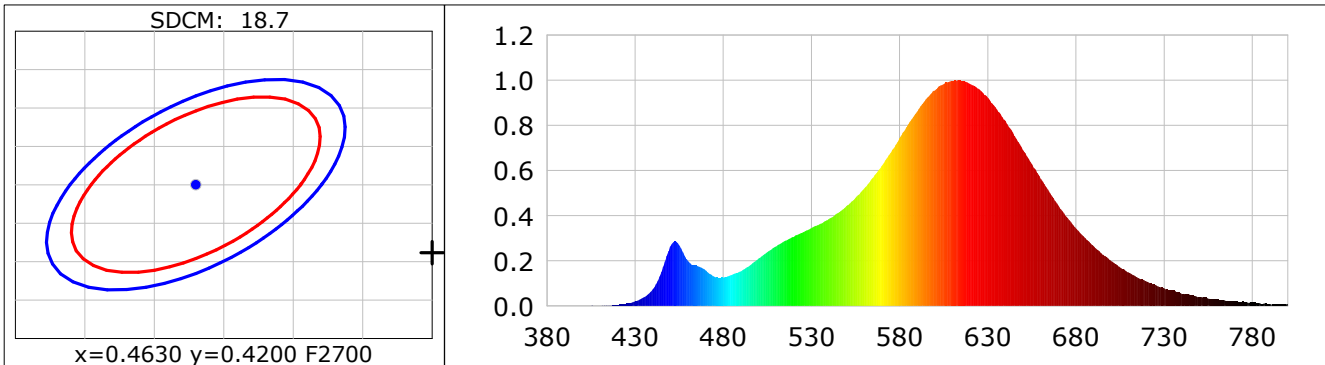
### Product Infomation

Product Category: LED STRIP  
 Product Spec: DRAC 5  
 Manufacturer: TECSOLELED S.L.

Product Type: LED STRIP  
 Product Number: 232  
 Buyer: TECSOLELED S.L.

### CIE Colorimetric Parameters

Chromaticity coordinates:  $x=0.4868$   $y=0.4112$   $u(u')=0.2797$   $v=0.3544$   $v'=0.5316$   
 CCT:  $T_c=2368K$  ( $duv=-0.00120$ ) Color Ratio:  $R=0.286$   $G=0.695$   $B=0.019$   
 Peak Wavelength: 613.2nm Half Bandwidth: 107.8nm  
 Dominant Wavelength: 586.5nm Color Purity: 0.695  
 CRI:  $R_a=82.8$ ,  $avgR(1\sim14)=79.0$ ,  $avgR(1\sim15)=78.7$  TM30:  $R_f=85$ ,  $R_g=97$   
 GAI:  $GAI\_BB\_8=99.6$ ,  $GAI\_BB\_15=108.0$ ,  $GAI\_EES=37.5$   
 R1 =82 R2 =94 R3 =93 R4 =80 R5 =83 R6 =95 R7 =78 R8 =57  
 R9 =13 R10=86 R11=81 R12=83 R13=85 R14=97 R15=74  
 Color Quality Scale:  $Q_a=81.0$ ,  $Q_f=85.2$ ,  $Q_p=86.8$ ,  $Q_g=89.3$   
 Q1 =76 Q2 =90 Q3 =85 Q4 =81 Q5 =83 Q6 =83 Q7 =81 Q8 =82  
 Q9 =90 Q10=89 Q11=85 Q12=81 Q13=80 Q14=72 Q15=73



### Photometric Parameters

Luminous Flux: 993.49 lm Efficiency: 117.31 lm/W Radiant Power: 3.232 W  
 Total mains efficacy: 108.63 lm/W Energy Efficiency Class: F (EU 2019/2015)

### Electric Parameters

Voltage: 24.000V Current: 0.3529A Power: 8.47W  
 Power Factor: 1.0000 Frequency: 0.00Hz

### Test Infomation

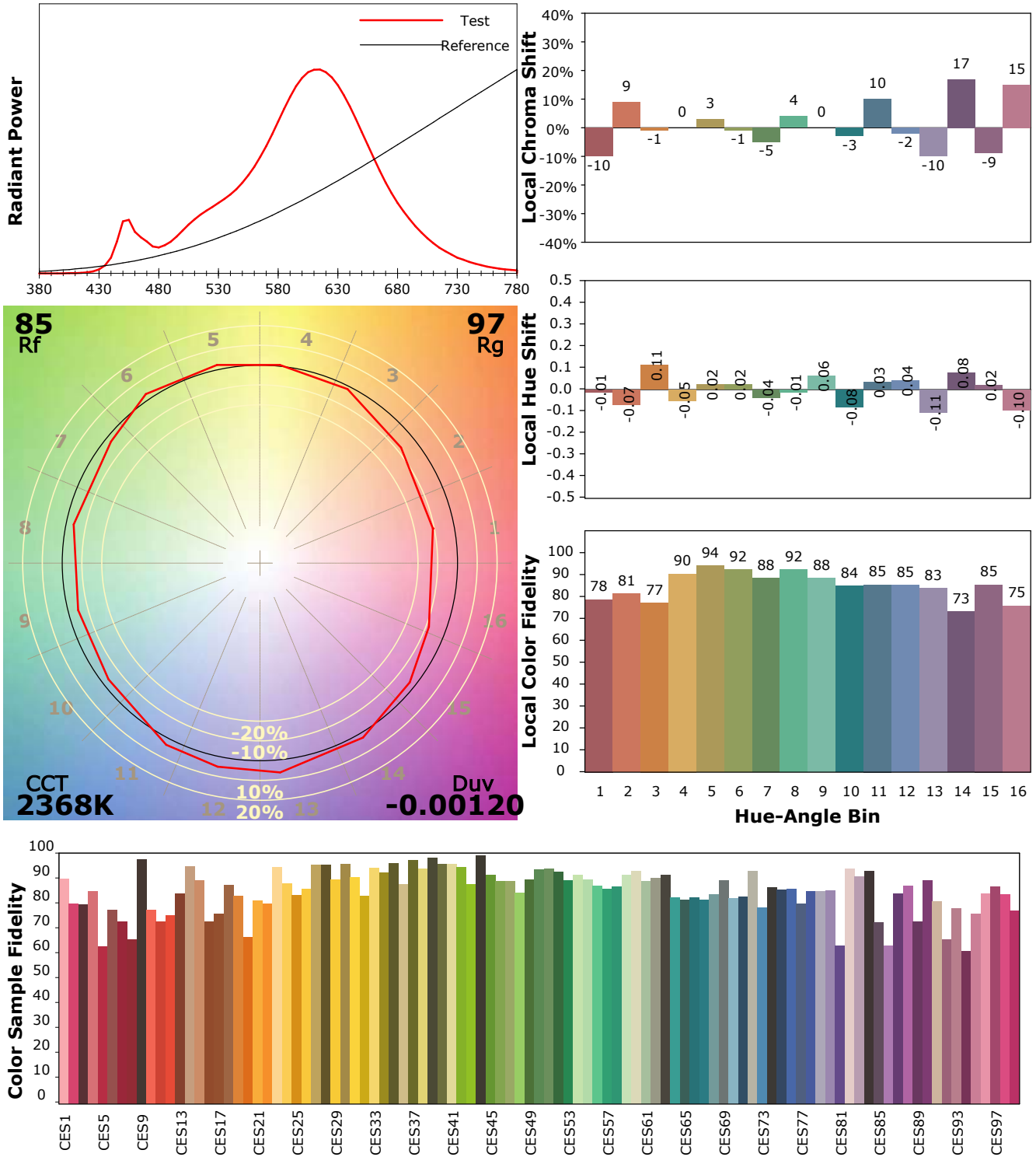
Scan Range: 380~800:1nm Photometric Method: sphere-spectroradiometer  
 Stabilization Time: 0 Sec ALC.: 1.0000 Photometric Condition: Sphere diameter: 1.50m, 4PI  
 Max of Signal: 47730 (2290) CCD Integration Time: 628.77 ms

## IES TM-30-18 Color Rendition Report

**Product Information**

Product Category: LED STRIP  
 Product Spec: 21059602440517  
 Manufacturer: TECSOLELED S.L.

Product Type: LED STRIP  
 Product Number: 232  
 Buyer: TECSOLELED S.L.



Condition: Tx:20.4°C, Ti:19.1°C, R.H.:60%  
 Test Lab: TECSOLELED S.L.  
 Operator: JORDAN GIL DIAZ

Test Device: Inventfine CMS-2S (Plus)  
 Test Time: 2021-10-28 11:28:48  
 Inspector: